

Excel V Treats Full Spectrum of Vascular Conditions

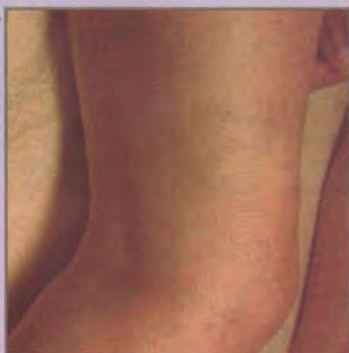


Jeremy B. Green, M.D.
Dermatologist
Dr. Brandt Dermatology Associates
Voluntary Assistant Professor of
Dermatology and Cutaneous Surgery
University of Miami, Miller School of
Medicine, Department of Dermatology
Coral Gables, FL

"I encourage family or friends in the room to watch as I am treating, and it creates one of those 'wow' moments as they see stubborn vessels disappear."



Leg veins before Tx



Leg veins after Excel V Tx

Photos courtesy of Caddell's Laser and Electrolysis Clinic

By Sean McKinney, Contributing Editor

The Excel V from Cutera, Inc. (Brisbane, Calif.) is a new laser that treats vascular conditions at all depths, ranging from superficial facial telangiectases, to thick port-wine stains. With the push of a button, switching from the long-pulsed 532 nm KTP mode to the long-pulsed 1064 nm Nd:YAG mode can be accomplished swiftly and seamlessly during a procedure.

According to Jeremy B. Green, M.D., a dermatologist at Dr. Brandt Dermatology Associates in Coral Gables, Fla., "the Excel V has changed my approach to the treatment of vascular lesions. It allows me to customize, titrating the treatment parameters to match the target. I can easily change the spot size from 3 mm to 12 mm and adjust the fluence or the pulse duration without skipping a beat." Dr. Green also noted that the device calibrates in real-time, "meaning there is no need to place the handpiece into the unit to recalibrate. There are no frustrating delays as I change parameters to treat small telangiectases, large areas of rosacea or poikiloderma and angiomas in the same patient."

Excel V's high-energy pulsed KTP mode can effectively treat vascular targets such as small telangiectases, cherry angiomas, pink-red port-wine stains and diffuse erythema. The long-pulsed 1064 nm mode is ideal for deeper or thicker vascular lesions including leg veins, periorbital blue veins, venous lakes and nodular port-wine stains. The optional microsecond 1064 nm treatment, known as Laser Genesis, is used for non-ablative skin rejuvenation, improving diffuse redness, dyspigmentation, pore size and texture.

"We can use the Excel V for every vascular lesion that walks in our door," said Dr. Green, who is also voluntary assistant professor of dermatology and

cutaneous surgery at the University of Miami, Miller School of Medicine, Department of Dermatology. "I treat pink and red striae, scars and resistant port-wine stains. The ability to induce purpura with this laser makes it incredibly versatile."

Dr. Green also noted that the optional Laser Genesis V mode is very popular. "We call the microsecond pulse 1064 nm Genesis mode 'laser toning,'" he said. "Our patients love the fact that there is no downtime."

Besides versatility, Excel V offers variable continuous contact cooling through a sapphire window that allows the temperature to be precisely adjusted from 5° C to 25° C. "You can cool before, during and after the laser pulse to protect the skin's surface," said Dr. Green. "You don't have to bother with cryogen or other consumables. Once you purchase the laser, there are no more costs."

The laser also gives the practitioner unparalleled target visualization. "Instead of requiring you to lift the handpiece to see results, the Excel V lets you see the laser-tissue interaction as you treat," said Dr. Green. "It's very gratifying. I encourage family or friends in the room to watch as I am treating, and it creates one of those 'wow' moments as they see stubborn vessels disappear."

Both the Excel V long pulsed and Laser Genesis V microsecond handpieces are incredibly light and ergonomic, greatly minimizing practitioner fatigue while treating large areas.

"Many patients are scared of lasers. The word itself can induce trepidation," Dr. Green pointed out. "But once they realize how comfortable treatment with the Excel V is, they are sold. Due to the increased comfort and consistent results, this laser is helping me build my practice."